



Halo Connect Portal Training

Tire Health Functions



Confidential

Halo Connect Web Portal provides a complete view of a fleet's tire health and provides tools for administrative management for portal

Tire Health Functions covered in this presentation:

- View and manage all inflation issues in your fleet
- Access reports covering tire health and performance over time
- Receive alerts via email and/ or SMS

Administration Functions covered in additional presentation:

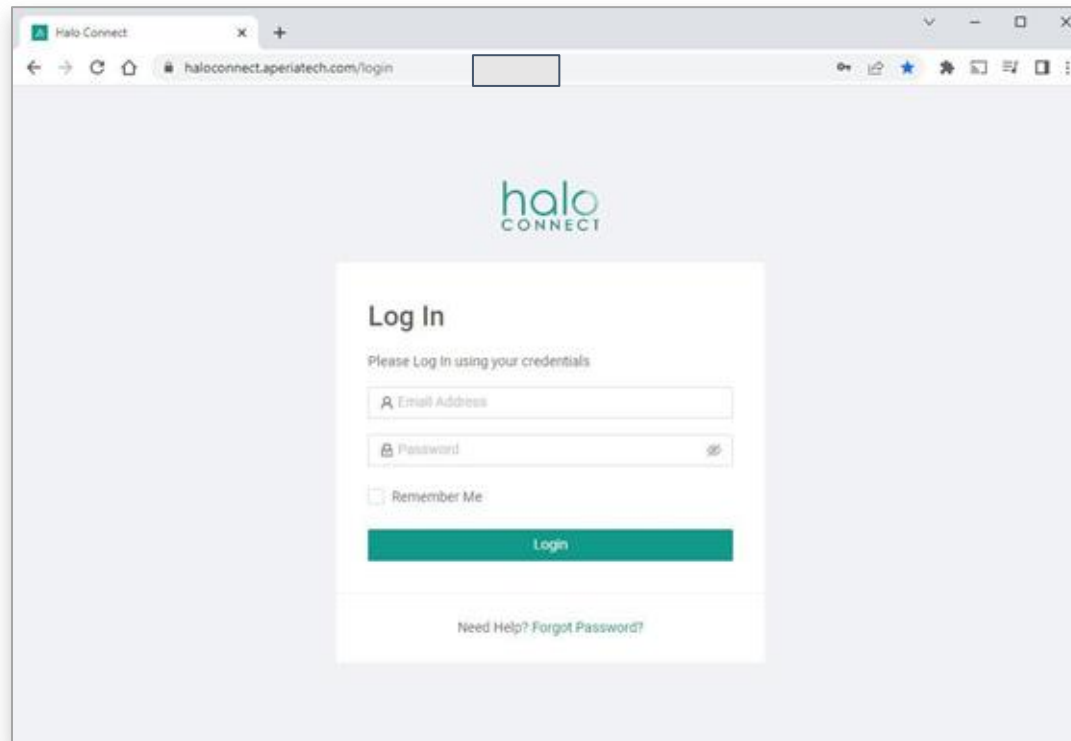
- Set up fleet's' vehicles and vehicle groups
- Manage email alerts and settings
- Control fleet account and user profiles

Portal Navigation



Access the Portal

<https://haloconnect.aperiatech.com>



You will receive an email invitation to the portal from your administrator

View Vehicles

All Vehicles Map Configuration

All vehicles with Aperia equipment:

- View and sort by group, configuration in all vehicles tab
- View all vehicles and tire status on a map in map tab
- View inflation set points on vehicle configuration tab

Vehicles

Fleet Name	Fleet Vehicle ID	Vehicle Group	Vehicle Configuration	Gateway SN	Actions
[Redacted]	1096	Pavement Marking Trucks	Single Dual Straight Truck	061369	Archive Show on Map
[Redacted]	1097	Pavement Marking Trucks	Single Dual Straight Truck	060851	Archive Show on Map
[Redacted]	1156	RPM Trucks	Single Dual Straight Truck	060606	Archive Show on Map
[Redacted]	1064	RPM Trucks	Single Dual Straight Truck	061331	Archive Show on Map
[Redacted]	1063	RPM Trucks	Single Dual Straight Truck	061166	Archive Show on Map
[Redacted]	1101	Removal Trucks	Single Dual	061462	Archive Show on Map
[Redacted]	1138	Removal Trucks	Single Dual	061136	Archive Show on Map

View Vehicle Issues

All vehicles with tire issues:

- Filter by Severity (critical, major, minor)
- and/or filter by States (leak, blowout, underinflation, underinflation and leak)
- Open item to see the specific issue associated with an issue
- Severity is color coded:
 - **Critical** - significant issue to be addressed immediately
 - **Major** - issue to be addressed in near term
 - **Minor** - low impact issue that can be become more significant if not addressed

Vehicle Issues

Vehicle Issues

Active Issues | Resolved Issues

Vehicles with issues: **Severity** [All] [Critical] [Major] [Minor] | **States** [All] [Leak] [Blowout] [Underinflation] [Underinflation and Leak] [Export to CSV]

Severity	Fleet Vehicle ID	Fleet	Recipients	Vehicle Group	Date Detected	Gateway SN
1	360008		4	Pilot Full Stack	Today at 11:46 AM	10067C45
1	360050		4	Pilot Full Stack	Today at 8:16 AM	1007C609
Critical	Alert ID: 3506026	State: Left Outer Rear Drive		Position: Left Outer Rear Drive	Date Detected: Today at 8:16 AM	
1	360070		4	Pilot Full Stack	Feb 04, 2026 01:47 AM	1007C61A
1	360004		4	Pilot Full Stack	Dec 03, 2025 01:16 AM	1007C421
1	360049		4	Pilot Full Stack	Oct 09, 2025 04:47 AM	10095C9B
1	360034		4	Pilot Full Stack	Sep 08, 2025 03:16 AM	100906DB
4	360032		4	Pilot Full Stack	Feb 01, 2026 07:01 PM	10095509

Open item

View Vehicle Details

View the details of a single asset

- This page is accessed by clicking on a specific vehicle from vehicles page or vehicles issue page
- See the tire history from Issues History tab
- See tread depth history from the tire management tab
- View the Aperia hardware status on hardware diagnostics tab
- View last known location of vehicle on map
- View the state of each or pair of tires on vehicle by selecting Tire Icon.
- The cold inflation pressure for last 30 days by default in this display

The screenshot shows the 'View Vehicle Details' page for a Tandem Drive vehicle. The page is divided into several sections:

- Vehicle Info:** Displays vehicle type (Tandem Drive), last update (Today at 7:15 PM), gateway ID (101FF0E...), gateway installed date (Jan 05, 2026), and VIN (4V4WC9EG2TN715708).
- Navigation Tabs:** Vehicle Info, Issues History, Tire Management, and Hardware Diagnostics.
- Battery Status:** Gateway Battery (97%) and Vehicle Battery (12.9 V).
- Tire Status:** A diagram of the vehicle's second axle / left wheel shows tire pressures. The left outer front tire is highlighted in red with a 'UL' (Critical Underinflation and Leak) icon and a pressure of 95 PSI. Other tires show pressures ranging from 105 to 108 PSI.
- Tire Details (1. Inner Tire):** No issues. Pressure: 106 PSI, Target Pressure: 100 PSI, Temperature: 39 F, Last Reading: Today at 7:24 PM, Sensor Serial Number: 102110F9_3.
- Tire Details (2. Outer Tire):** Critical Underinflation and Leak. Pressure: 95 PSI, Target Pressure: 100 PSI, Temperature: 41 F, Last Reading: Today at 7:24 PM, Sensor Serial Number: 102110F9_2.
- Pressure Graph (PSI):** A line graph showing pressure over time for Inner Tire (purple) and Outer Tire (green). A toggle for 'Cold Inflation Pressure (30 Days)' is shown above the graph.
- Alerts:** Alert ID: 3498043 - Left Outer Front Drive | Feb 09, 2026 03:46 PM. Description: Critical Underinflation and Leak on the Left Outer Front Drive. Recommendation: Check the tire for leaks and repair/replace the tire immediately.
- Vehicle Location:** A map showing the vehicle's current location in the New York City area.

Red annotations highlight key features: 'Vehicles' (left sidebar), 'Vehicle Info', 'Issues History', 'Tire Management', 'Hardware Diagnostics', 'Tire Icon' (pointing to the UL icon), 'Toggle: Cold Inflation Pressure (30 days)', and 'Map'.

View Vehicle Details - Operational Pressure

Also view the previous 2 days of operational pressure on this page

- This view is accessible by clicking the pulldown menu that shows cold inflation pressure (30 day) or operational pressure (2 day)
- The operational pressure shows pressure in tire with corresponding vehicle speed
- In this specific view, you can a tire with an underinflation and leak. As the vehicle drives, the halo adds air to the underflated tire
- On the previous view, you can see the leak start and the halo increase CIP

Vehicles

263096 PC444 - Duro-Bag - Elizabeth, NJ

Vehicle Type: Tandem Dual | Last Update: Today at 7:40 PM | Gateway Serial Number: 101FF0E6 | Gateway Installed: Jan 05, 2026 | VIN: 4V4WC9E02TN715708

Vehicle Info | Issues History | Tire Management | Hardware Diagnostics

Gateway Battery: 97% | Vehicle Battery: 12.9 V

1. Inner Tire: No Issues | Pressure: 106 PSI | Target Pressure: 100 PSI | Temperature: 39 F | Last Reading: Today at 7:24 PM | Sensor Serial Number: 102110F9_3

2. Outer Tire: Critical Underinflation and Leak | Pressure: 95 PSI | Target Pressure: 100 PSI | Temperature: 41 F | Last Reading: Today at 7:24 PM | Sensor Serial Number: 102110F9_2

The vehicle is not included in any Setpoint Configuration. [Assign Configuration]

Pressure Graph (PSI) | Inner Tire | Outer Tire | Speed | [Download CSV] | Operational Pressure (2 Days)

Toggle: Operational Pressure (2 days)

Alerts: Alert ID: 3498043 - Left Outer Front Drive | Feb 09, 2026 03:46 PM | [Mark Resolved]

Critical Underinflation and Leak on the Left Outer Front Drive. To avoid an emergency roadside call, resolve immediately

We recommend: Check the tire for leaks and repair/replace the tire immediately. This leak could lead to a blowout if it is not repaired. Notify drivers to pay attention to this tire.

Vehicle Location: Today at 7:19 PM | View on Google Maps

View Reports - Weekly

View the weekly fleet performance

- See how many issues were opened and addressed during the previous week along with the average time to resolve an issue
- Also see a current list of vehicle issues along with details for each vehicle

Vehicles

- Vehicle Issues
- Reports**
- Vehicles
- Alert Settings
- Accounts Management
- User Management

Vehicle Issues

26 January, 2026 - 01 February, 2026 UTC Timezone

All Groups [Share Page](#) [Download PDF](#)

Weekly Summary

New Issues 54	New Critical Issues - Last 7 Days 6	Open Issues 18
Resolved Issues 71	Average Time to Resolve 1d 12h	

Open Issues: 1 Critical, 3 Major, 14 Minor

Critical to Minor

Vehicle 2604

Critical 1 Major 1 Minor 0

Vehicle Group: 3AKJHHR7TSSL0795 Latest Data Feb 01, 2026 03:58 PM

Position	Issue	Issue Age	Latest Pressure
Right Outer Front Drive	Critical Underinflation and Leak	1 day	8 PSI
Left Inner Front Drive	Major Underinflation	4 days	80 PSI

[Go to vehicle details](#)

Vehicle 2651

Critical 0 Major 1 Minor 1

View Reports - Daily

View the daily status

- See how many issues are open and their severities
- Also see a current list of vehicle issues along with details for each vehicle

Vehicles

Vehicle Issues

Reports

Vehicles

Alert Settings

Accounts Management

User Management

List of Reports / Daily Tire Issue Report

February 16th, 2026 UTC Timezone

All Groups

Share Page

Download PDF

1 Critical

0 Major

2 Minor

Critical to Minor

Open critical issues

Vehicle 1385

● Critical 1 ● Major 0 ● Minor 0

Vehicle Group 1XKYD49X7S.J158562 Latest Data Feb 16, 2026 07:59 PM

Position	Issue	Issue Age	Latest Pressure
Right Inner Front Drive	● Critical Underinflation	43 minutes	1 PSI

Go to vehicle details

Vehicle 1516

● Critical 0 ● Major 0 ● Minor 2

Vehicle Group 1XKYD49X5S.J158768 Latest Data Feb 16, 2026 07:58 PM

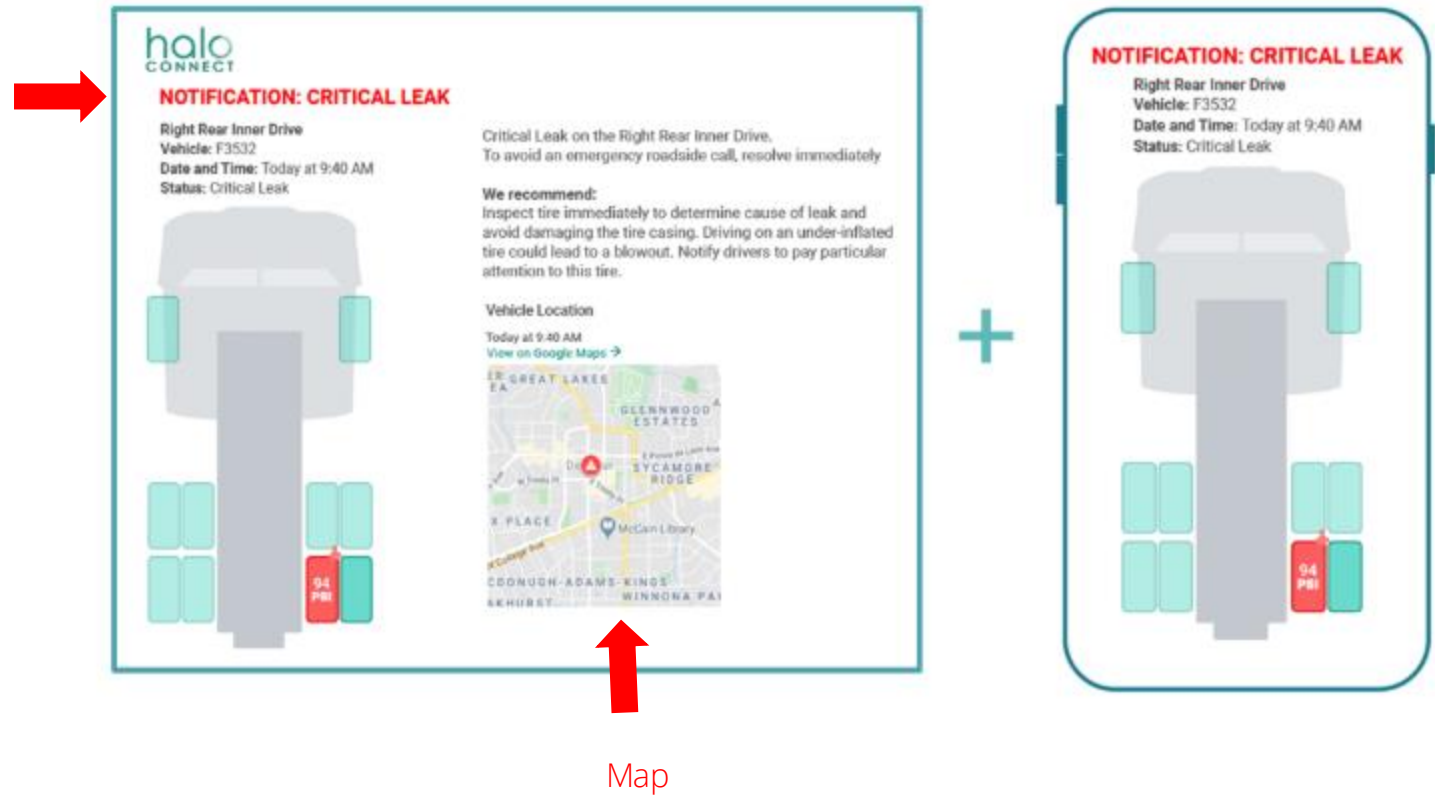
Position	Issue	Issue Age	Latest Pressure
Left Inner Front Drive	● Minor Underinflation	about 4 hours	80 PSI
Left Inner Rear Drive	● Minor Underinflation	about 3 hours	83 PSI

Go to vehicle details

Vehicle Issues

Receive email alerts on each vehicle issues

- Alerts are detailed in text and recommended actions are provided
- Alert provide location of vehicle with a link to Google maps



- The Aperia Web Portal provides several different ways to manage alerts and tire health. Choose the option(s) that work best for your fleet and workflow. Action your alerts using one of these methods:
 - Email (and text) alerts - email for each unique issue
 - View vehicle alerts - list with state/severity filters
 - View vehicles/vehicle maps - map with all vehicle issues
 - Daily (and weekly) reports - updated 1x per period
 - and “Issues near me” in the Halo Tech App
- Click on a vehicle issue will lead to the View Vehicle Details page

For service and parts inquiries please contact:

Aperia Customer Support
support@aperiatech.com
1-844-RUN-HALO

For technical support and installation inquiries please contact:

Aperia Technical Support
support@aperiatech.com
1-844-RUN-HALO

Find us on the web at: <https://aperiatech.com>